

**Catalog No.:** **G02103**

**Product Name:** AccuRuler Prestained *Broad*  
Protein Ladder

**Size:** 2x250µl

**Description:** AccuRuler Prestained Broad Protein Ladder contains 12 prestained proteins, covering a wide range of molecular weights from 10 to 310kDa. It is designed for monitoring protein separated during polyacrylamide gel electrophoresis, verification of Western transfer efficiency on membranes and for sizing of proteins. The ladder is supplied in protein gel loading buffer and is ready-to-use. No need to heat, dilute, or add reducing agent before loading.

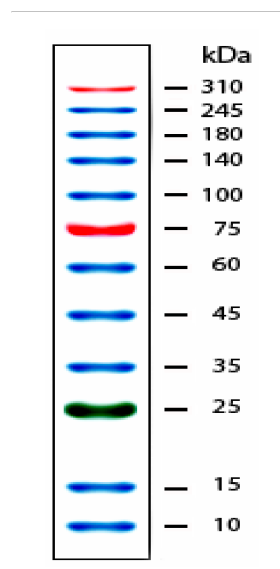
**Contents:** About 0.1~0.4 mg/ml of each protein in 20 mM Trisphosphate (pH 7.5 at 25°C), 2% SDS, 1 mM reducing reagent, 3.6 M Urea, and stabilizer.

**Usage:** For each application, 3 - 5µl is needed, depending on the size of the wells.

### Quality Control:

Tested on polyacrylamide gel electrophoresis and Western Blotting.

**Storage:** Store at -  
20°C.



**Note:** The apparent molecular weight of each protein (kDa) has been estimated by calibration against an unstained protein ladder on polyacrylamide gel electrophoresis under each condition.

Related Products	Cat. No.
• ECL Western Detection Kit	G075
• Western Protein Maker	WM1000
• Prestained Protein Ladder	G10180

*For laboratory research use*